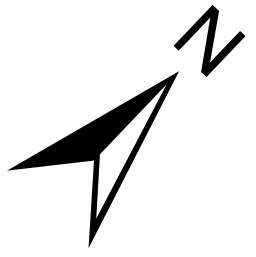
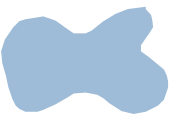




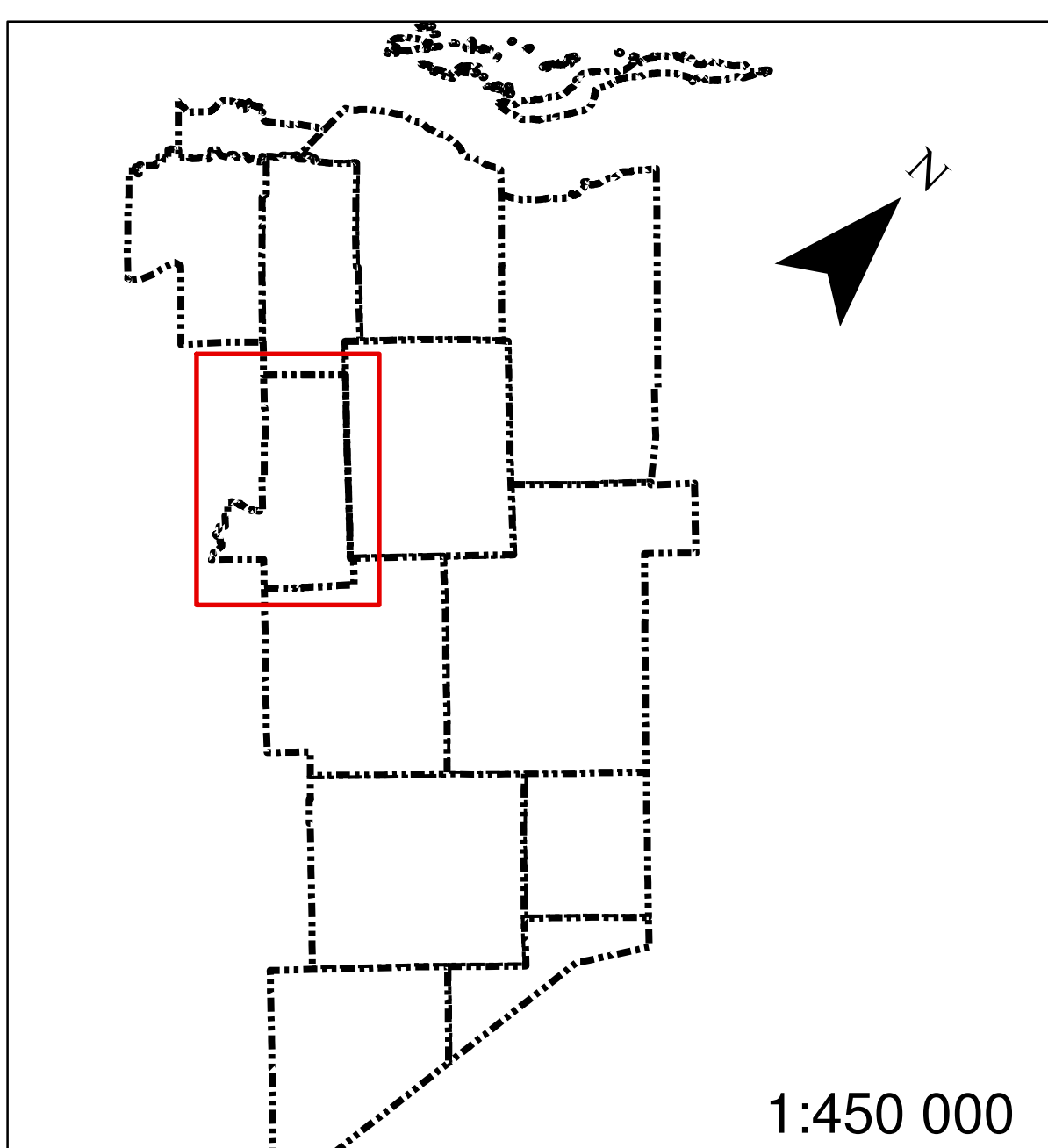
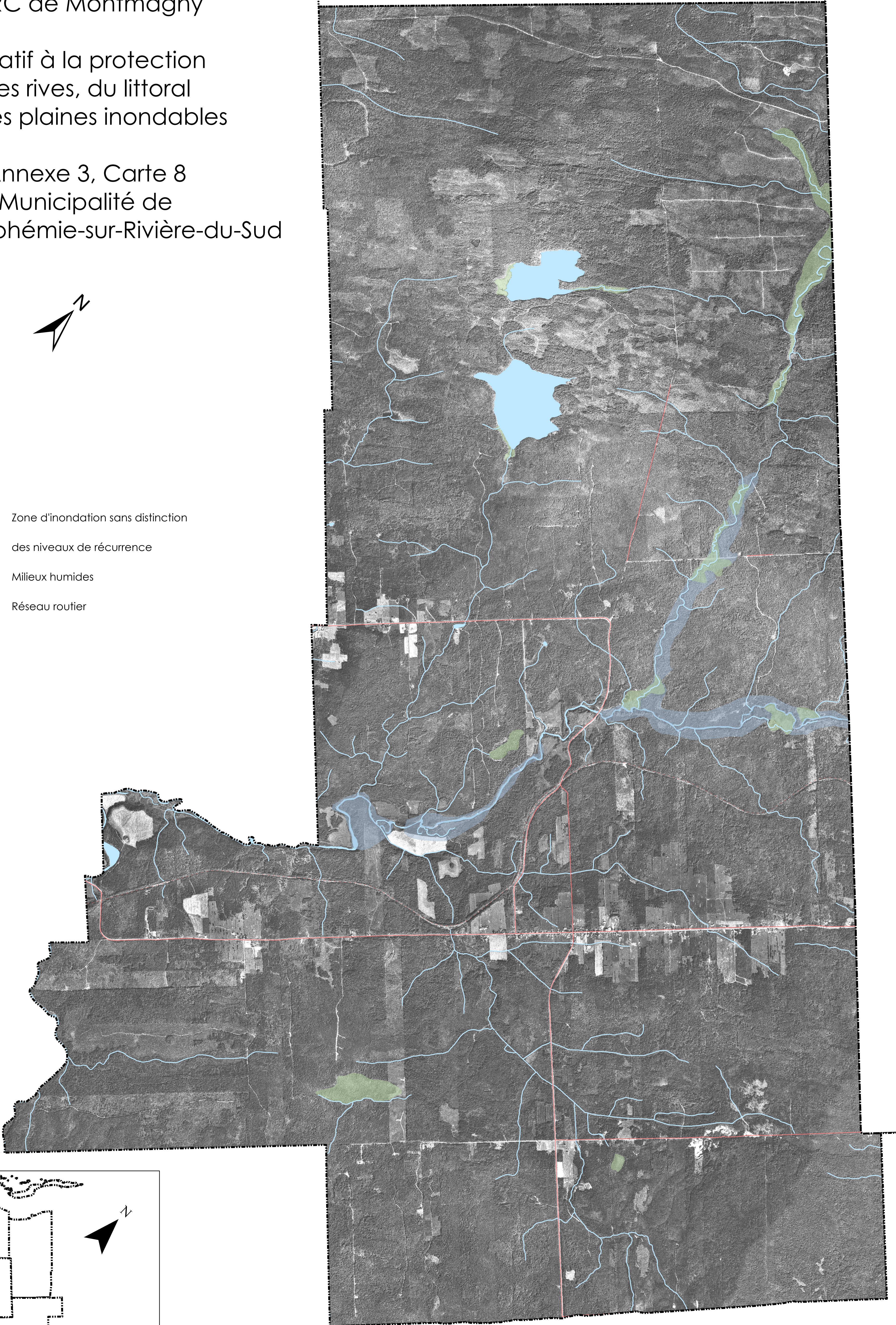
Règlement de contrôle intérimaire
MRC de Montmagny

Relatif à la protection
des rives, du littoral
et des plaines inondables

Annexe 3, Carte 8
Municipalité de
Sainte-Euphémie-sur-Rivière-du-Sud



-  Zone d'inondation sans distinction
des niveaux de récurrence
-  Milieux humides
-  Réseau routier



1:450 000

1:20 000

0 500 1 000
Mètres