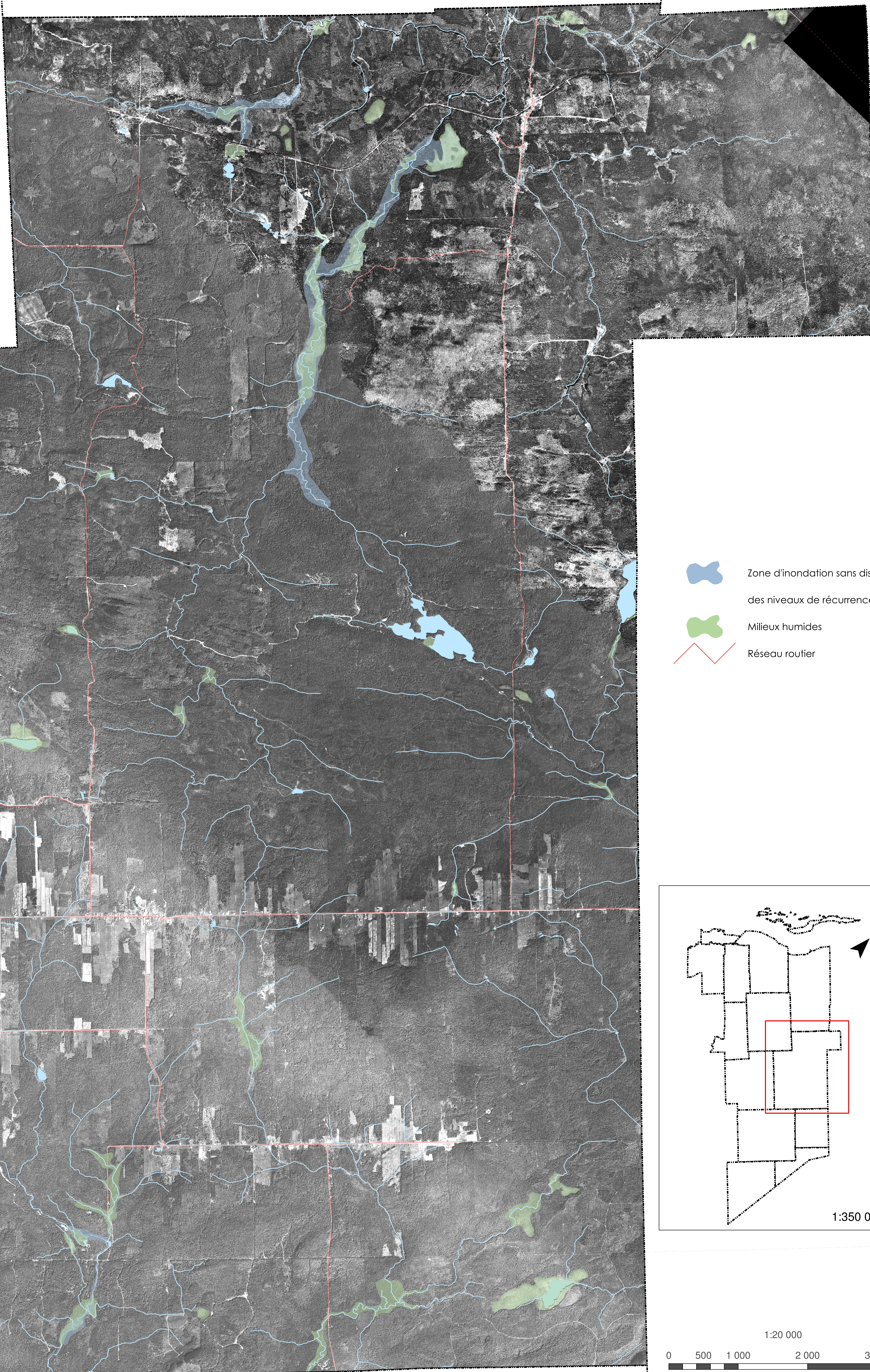
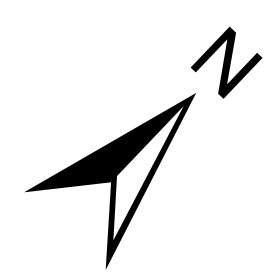





Règlement de contrôle intérimaire  
MRC de Montmagny

Relatif à la protection  
des rives, du littoral  
et des plaines inondables

Annexe 3, Carte 6  
Municipalité de  
Sainte-Apolline-de-Patton



-  Zone d'inondation sans distinction des niveaux de récurrence
-  Milieux humides
-  Réseau routier

